



**Attention!**

- don't let children or pets alone with the burning candle
- don't let the candle burn on it's own
- don't use the candle near curtains or heat sources
- don't clear the candle with water
- don't put the candle near a wind breeze

**10131 Tea light holder angel**

You can find our complete range of do-it-yourself-kits on

**www.hobaku.de**

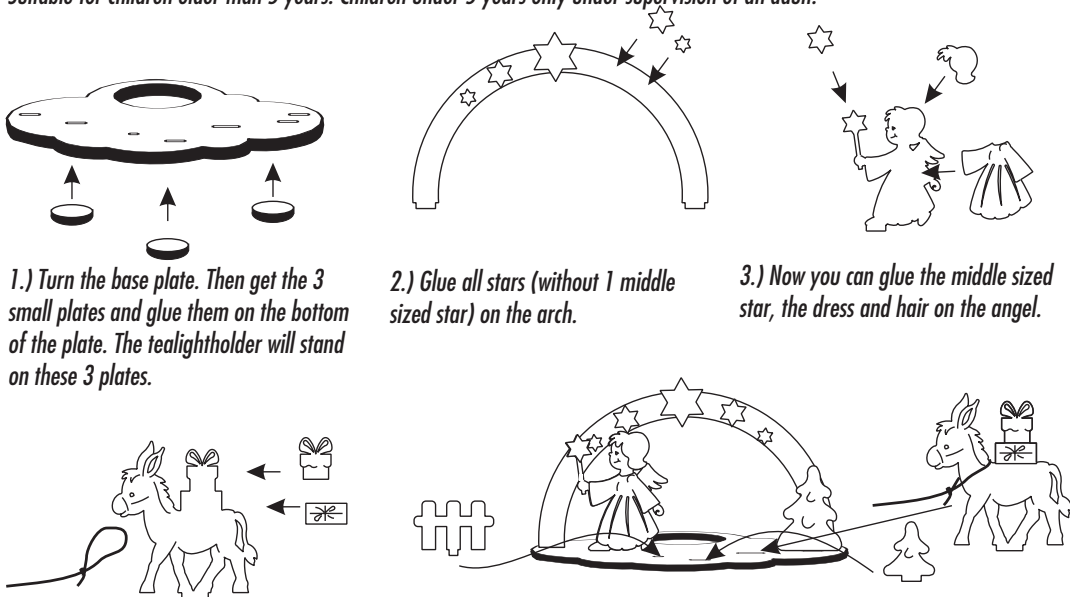
Drechserei Kuhnert GmbH

08237 Steinberg

Hauptstr. 28

**INSTRUCTIONS**

You can use common wood glue. It's easier to colour the parts before mounting. Only for decoration, no toy!  
 Suitable for children older than 5 years. Children under 5 years only under supervision of an adult.



1.) Turn the base plate. Then get the 3 small plates and glue them on the bottom of the plate. The tealightholder will stand on these 3 plates.

2.) Glue all stars (without 1 middle sized star) on the arch.

3.) Now you can glue the middle sized star, the dress and hair on the angel.

4.) Make a knot on the leash and put it over the head of the donkey. Then glue the gifts on the donkey.

5.) Glue all parts (like shown on the picture) on the plate. Then place the leash in the angel's hand.

6.) After this you can put in the glass for the tea light.