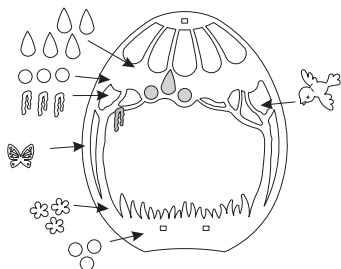


INSTRUCTIONS

You can use common wood glue. It's easier to colour the parts before mounting. Only for decoration, no toy! Suitable for children older than 5 years. Children under 5 years only under supervision of an adult. Use glue for all steps.

Attention!

Don't use the glass bowl for tea lights! Only for decoration!



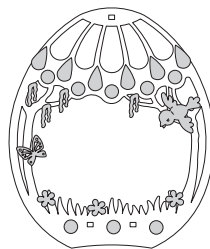
10165 Easter egg

You can find our complete range of do-it-yourself-kits on www.hobaku.de

Drechserei Kuhnert GmbH

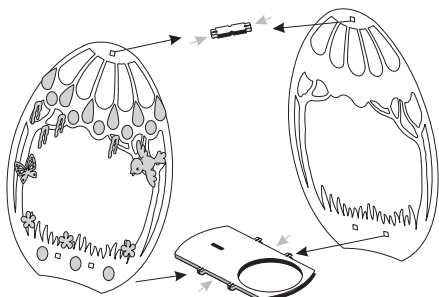
08237 Steinberg

Hauptstr. 28

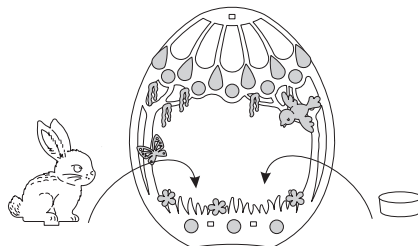


1.) Colour the Easter egg. Then decorate the exterior with the coloured wooden parts.

Important: Don't cover the square holes with wooden parts because the egg has to be stuck together there.



2.) Glue together all parts like shown. Let the glue dry out.



3.) Colour the bunny and stick the bunny into the slot of the ground plate. Then insert the glass bowl into the hole of the ground plate. Don't place tea lights inside the glass bowl. You can use Easter grass or an egg to fill the glass bowl. The Easter egg can stand on the ground or it can be used for hanging.